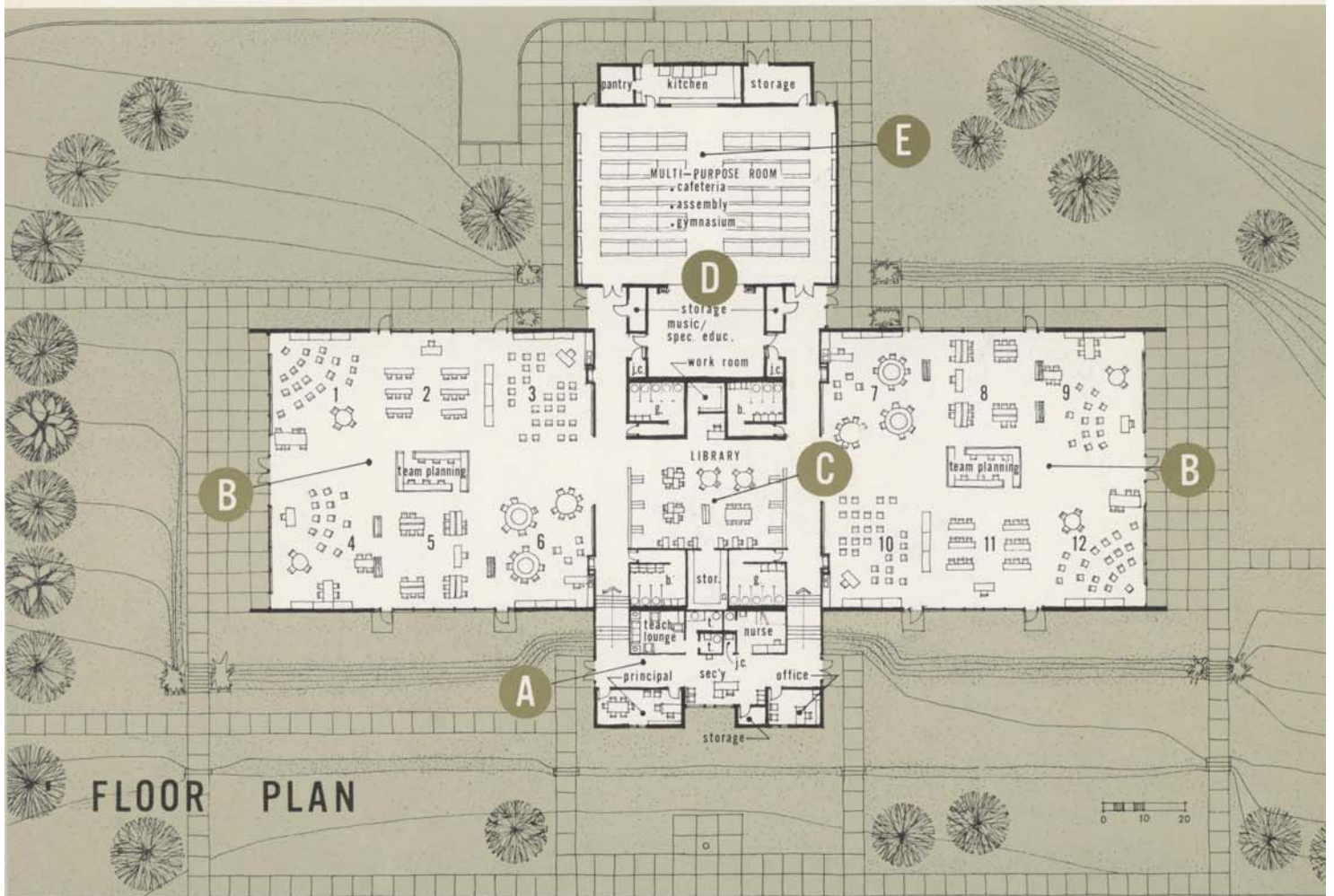


# Twin Echo Elementary School -

PISTRUI & CONRAD  
ARCHITECTS

1971



**Zone A — Administrative Area —** Administrative suite, teacher's rest areas, nurses room and front entrances.

**Zone B — Learning Area (quiet) —** Teaching stations (open plan), centralized teacher planning stations, direct exterior exits. (Equivalent to 12 classrooms — 35 students each.)

**Zone C — Resource Area (quiet) —** Library, central resource and equipment storage.

**Zone D — Special Education Area (noisy) —** Music classes, art workshop, audio-visual presentations. (Functions as stage for school assemblies.)

**Zone E — Multi-Purpose Area (noisy) —** Functions as cafeteria (with kitchen), gymnasium and assembly hall (with stage).



